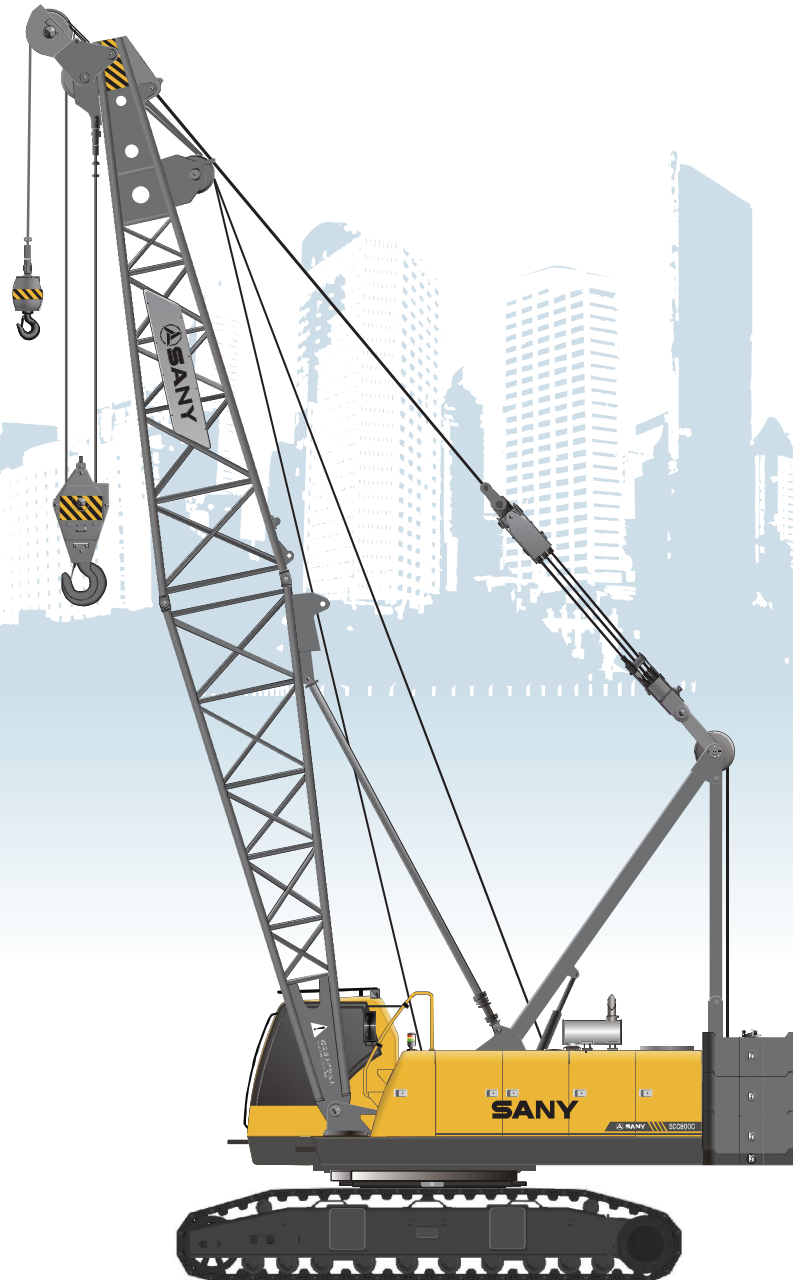




SANY

Quality Changes the World



HYDRAULIC CRAWLER CRANE SCC 750E

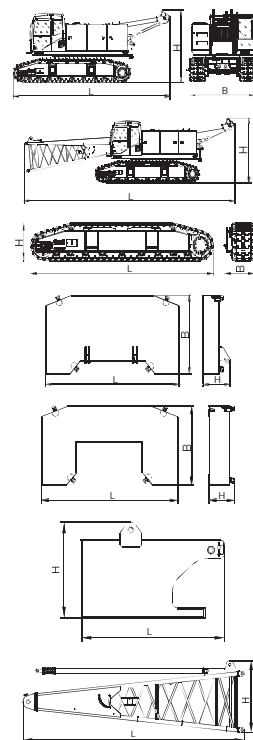
PERFORMANCE PARAMETERS

Main technical parameters of SCC750E crawler crane			
Performance Index		Unit	Parameter
Standard Boom Operating Condition	Max. Rated Lifting Capacity	t	75
	Max. Lifting Torque	m	711×4m
	Length of Basic Boom	m	12
Fixed Jib Operating Condition	Longest Boom	m	57
	Boom Luffing Angle	°	30°~80°
	Max. Rated Lifting capacity	t	7
Speed parameters	Max. Rated Lifting Torque	m	6.71×22m
	Boom Length	m	27~42
	Jib Length	m	9~18
	Longest boom + Longest luffing jib	m	42+18
Engine	Rope Speed of Main and Auxiliary Winches	m/min	0~120(Forth layer)
	Rated single lifting rope pull	t	7
	Rope Speed of Luffing Winch*	m/min	0~100(Forth layer)
	Slewing Speed	rpm	0~3
Transportation Parameter	Traveling Speed*	Km/h	0~1.2
	Gradient capability	%	30
	Model		6CTAA8.3-C240
Transportation Parameter	Output power	kW	179
	Rated speed	rpm	2200
	Overall weight (Basic boom + 75t hook)	t	63
Transportation Parameter	Weight of counterweight	t	24
	Max. Transportation Weight of Single Piece (including boom base, but not including central and rear counterweights)	t	34.3
	Transportation Dimension mm (L×W×H) (including boom base, but not including central and rear counterweights)	mm	12300×3360×3300
	Average Ground Pressure	MPa	0.09

Notes: Rope speed of main / auxiliary winch, rope speed of luffing winch, slewing and traveling speeds will change with the load.

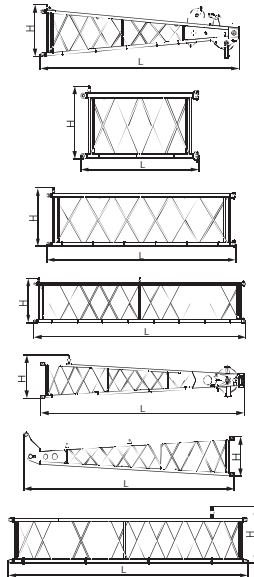
TRANSPORTATION DIMENSIONS

Body (not including boom base, and central and rear counterweights)	×1
Length (L)	8.2m
Width (B)	3.36m
Height(H)	3.3m
Weight	32.8t
Body (not including central and rear counterweights)	×1
Length (L)	12.3m
Width (B)	3.36m
Height(H)	3.3m
Weight	34.3t
Track frame assemblies	×2
Length (L)	6.10m
Width (B)	1.12m
Height(H)	1.11m
Weight	6.90t
Counterweight tray	×1
Length (L)	3.30m
Width (B)	1.70m
Height (H)	0.61m
Weight	6.0t
Rear counterweight welded parts	×3
Length (L)	3.30m
Width (B)	1.70m
Height(H)	0.61m
Weight	6.0t
Central counterweight blocks	×2
Length (L)	1.33m
Width (B)	0.78m
Height(H)	0.79m
Weight	1.5t
Boom base	×1
Length (L)	6.22m
Width (B)	1.53m
Height(H)	1.79m
Weight	1.49t



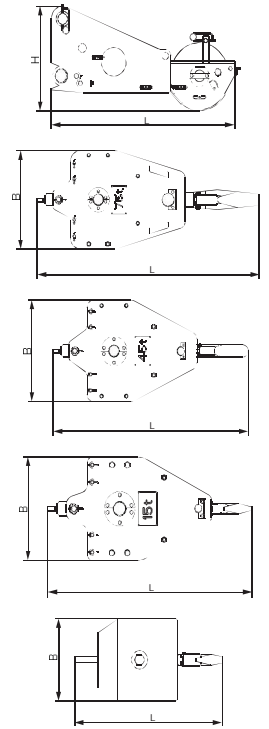
TRANSPORTATION DIMENSIONS

Boom jib	X1
Length (L)	6.47m
Width (B)	1.79m
Height(H)	1.67m
Weight	1.1t
3m boom insert	X1
Length (L)	3.14m
Width (B)	1.53m
Height(H)	1.69m
Weight	0.46t
6m boom insert	X1
Length (L)	6.14m
Width (B)	1.53m
Height(H)	1.69m
Weight	0.77t
9m boom insert	X4
Length (L)	9.14m
Width (B)	1.53m
Height(H)	1.69m
Weight	0.93t
Jib tip	X1
Length (L)	4.94m
Width (B)	0.87m
Height(H)	0.93m
Weight	0.36t
Jib base	X1
Length (L)	4.69m
Width (B)	0.89m
Height(H)	0.77m
Weight	0.3t
4.5m jib inserts	X2
Length (L)	4.57m
Width (B)	0.87m
Height(H)	0.958m
Weight	0.2t



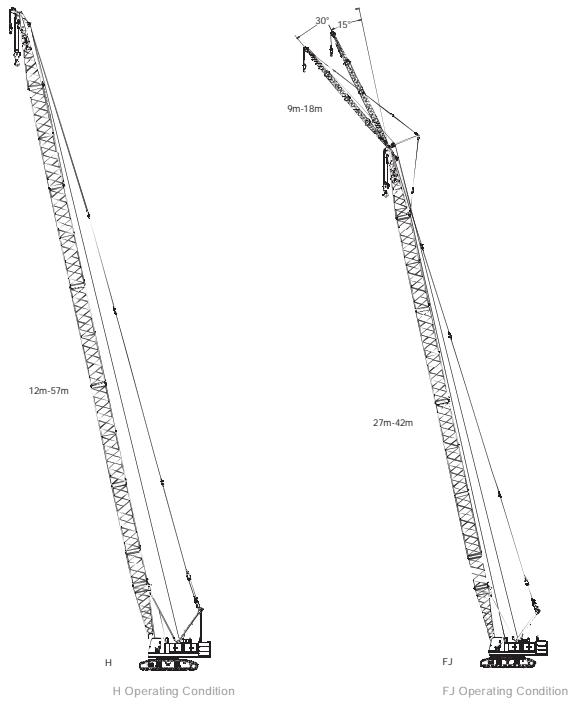
TRANSPORTATION DIMENSIONS

Boom extension	X1
Length (L)	1.47m
Width (B)	0.93m
Height (H)	0.61m
Weight	0.24t
75t lifting hook	X1
Length (L)	1.75m
Width (B)	0.69m
Height (H)	0.46m
Weight	0.70t
45t lifting hook	X1
Length (L)	1.52m
Width (B)	0.69m
Height (H)	0.37m
Weight	0.49t
15 hook	X1
Length (L)	1.34m
Width (B)	0.60m
Height (H)	0.35m
Weight	0.28t
9t ball hook	X1
Length (L)	0.75m
Width (B)	0.37m
Height(H)	0.37m
Weight	0.25t



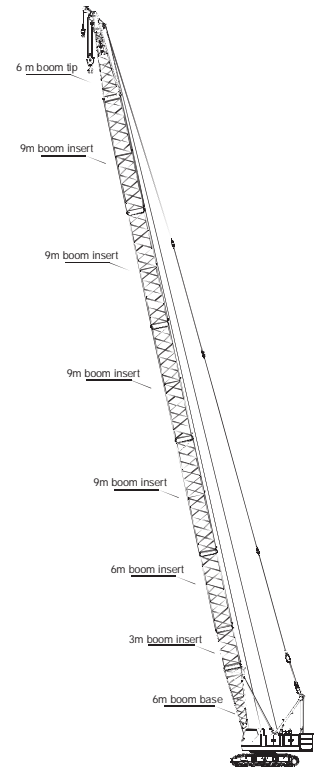
- Notes:
1. The transportation dimensions are not drawn to proportion. The dimensions in the sketch are design value excluding packages.
 2. The weight is design value and there may be tiny difference due to the manufacturing calibration.
 3. After product upgrading, the actual weight is subjected to the latest products.

OPERATING CONDITION COMBINATION

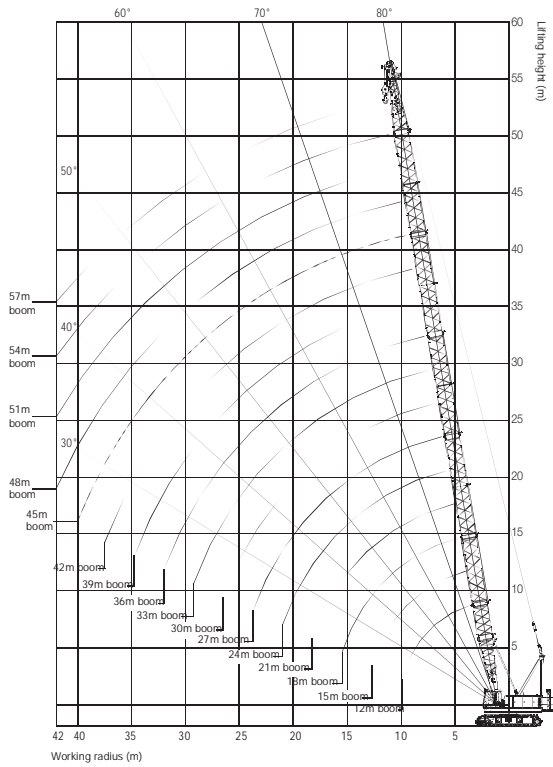


H OPERATING CONDITION COMBINATION

Boom length m	Insert		
	3m	6m	9m
12	-	-	-
15	1	-	-
18	-	1	-
21	-	-	1
24	1	-	1
27	-	1	1
30	1	1	1
33	-	-	2
36	1	-	2
39	-	1	2
42	1	-	3
45	-	1	3
48	1	1	3
51	-	-	4
54	1	-	4
57	-	1	4



OPERATING RANGE DIAGRAM OF H OPERATING CONDITION



BOOM LOAD CHART (H OPERATING CONDITION)

Boom Load Chart(H Operating Condition)

Radius	Boom Length 12m~33m								Rear Counterweight 24t	Radius
	12	15	18	21	24	27	30	33		
3.6	75									3.6
4	71	71								4
5	56	56	56	53.9						5
6	43	42.6	42.3	42	41.6					6
7	34.1	33.9	33.7	33.5	33.2	32.9	32.6			7
8	28.2	28	27.9	27.7	27.5	27.3	27	26.8		8
9	24	23.8	23.7	23.6	23.4	23.2	23	22.8		9
10	20.8	20.7	20.6	20.5	20.3	20.1	19.9	19.8		10
11	18.4	18.2	18.1	18	17.9	17.7	17.5	17.4		11
12		16.2	16.2	16.1	15.9	15.8	15.6	15.5		12
13		14.6	14.6	14.5	14.3	14.2	14	13.9		13
14		13.3	13.2	13.1	13	12.9	12.7	12.6		14
15			12.1	12	11.8	11.7	11.6	11.5		15
16				11.1	11	10.9	10.8	10.6	10.5	16
18					9.4	9.3	9.2	9	8.9	18
20						8	8	7.8	7.7	20
22							7.1	7	6.8	22
24								6.1	6	24
26									5.3	26
28										28

BOOM LOAD CHART (H OPERATING CONDITION)

Boom Load Chart(H Operating Condition)

Radius	Boom Length 36m~57m								Rear Counterweight 24t	Radius
	36	39	42	45	48	51	54	57		
8	26.6									8
9	22.6	22.4	22.1							9
10	19.6	19.4	19.3	19.1	18.6					10
11	17.3	17.1	16.9	16.8	16.6	16.2	15.8			11
12	15.4	15.2	15	14.9	14.7	14.6	14.3	13.9	12	12
13	13.8	13.6	13.5	13.3	13.2	13	12.9	12.6	13	13
14	12.5	12.3	12.2	12	11.9	11.7	11.6	11.4	14	14
15	11.4	11.2	11.1	10.9	10.8	10.6	10.5	10.3	15	15
16	10.4	10.2	10.1	10	9.8	9.7	9.6	9.4	16	16
18	8.8	8.7	8.5	8.4	8.3	8.1	8	7.9	18	18
20	7.6	7.4	7.3	7.2	7.1	6.9	6.8	6.6	20	20
22	6.6	6.5	6.3	6.2	6.1	6	5.8	5.7	22	22
24	5.8	5.7	5.5	5.4	5.3	5.2	5	4.9	24	24
26	5.1	5	4.9	4.8	4.6	4.5	4.4	4.3	26	26
28	4.6	4.4	4.3	4.2	4	3.9	3.8	3.7	28	28
30	4.1	3.9	3.8	3.7	3.5	3.4	3.3	3.2	30	30
32	3.6	3.5	3.4	3.3	3.1	3	2.9	2.8	32	32
34		3.1	3	2.9	2.7	2.6	2.5	2.3	34	34
36			2.7	2.6	2.4	2.3	2.2	2	36	36
38				2.3	2.1	2	1.8	1.7	38	38
40					2	1.8	1.7	1.6	40	40
42						1.6	1.5	1.3	42	42

Notes-Rated Load of Crane

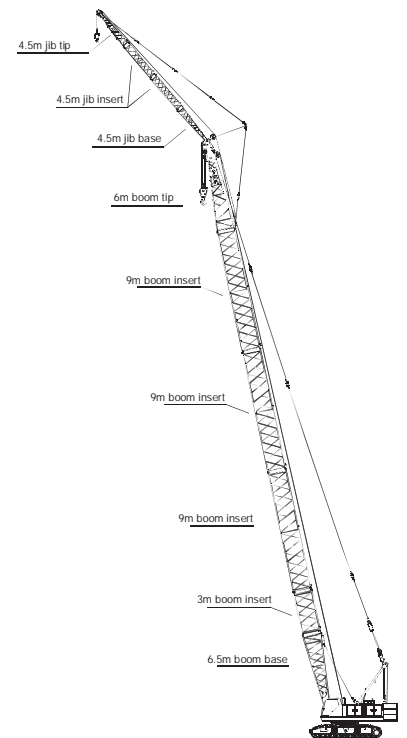
- The rated load in the table is the value under the condition that the non-traveling heavy load is lifted slowly and steadily from the solid and flat ground.
- The rated load in the table is calculated based on 75% of the tipping load under wind speed of less than 9.8m/s.
- The rated load value in the table includes the weight of lifting hooks. The actual hoisting capacity is value that the rated value minus the weight of all lifting tools (including 75t hooks 0.70t, 45t lifting hook 0.49t, 15t lifting hook 0.28t, 9t lifting hook 0.25t).
- With jib or tip extension installed, the rated load value in the table includes the weight of main and auxiliary lifting hooks, and the values listed in table below. The actual hoisting capacity of the crane is a value that the value in the boom rated load chart minus the weight listed in the table below and boom head equivalent weight converted by the weight of main hook, auxiliary hook, and wire rope.

Jib length (m)	9	13.5	18	Jib extension
Deducted weight (t)	1.2	1.5	1.8	0.3

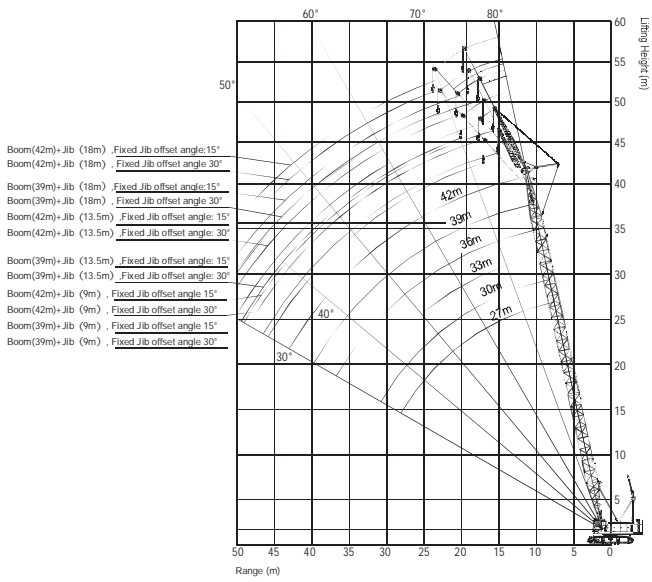
- The length of installable boom is 27m-42m.
- The track frame shall be expanded during lifting.
- All values in load chart are applicable for 360° rotation.

FIXED JIB OPERATING CONDITION

Jib Length	Insert/Insert
m	4.5m
9	-
13.5	1
18	2



OPERATING RANGE OF FIXED JIB OPERATING CONDITION



FIXED JIB LOAD CHART (FJ OPERATING CONDITION)

SCC750E Fixed Jib Load Chart 1/3
(Boom 27m-30m, Jib 9m-18m)

		Counterweight 24t													
		27				30									
Radius		9		13.5		18		9		13.5		18		Radius	
		15	30	15	30	15	30	15	30	15	30	15	30		
10		7/10.2						7/10.8						10	
12		7.0	7/12.2	7/12.2				7.0	7/12.7	7/12.7				12	
14		7.0	7.0	7.0	6.3/15.1	5.4/14.1		7.0	7.0	7.0	6.3/15.7	5.4/14.7		14	
16		7.0	7.0	7.0	6.1	5.3		7.0	7.0	7.0	6.2	5.3		16	
18		7.0	7.0	7.0	5.8	5.2	4.8/18.1	7.0	7.0	7.0	5.9	5.2	4.8/18.6	18	
20		7.0	7.0	6.7	5.4	5.1	4.5	7.0	7.0	7.0	5.6	5.1	4.6	20	
22		6.6	6.7	6.3	5.2	5.0	4.3	6.5	6.7	6.5	5.3	5.0	4.4	22	
24		5.8	5.9	5.8	4.9	4.9	4.1	5.8	5.9	5.8	5.0	5.0	4.2	24	
26		5.2	5.3	5.3	4.7	4.6	3.9	5.1	5.2	5.2	4.8	4.8	4.0	26	
28		4.6	4.7	4.7	4.5	4.3	3.7	4.5	4.6	4.6	4.6	4.5	3.8	28	
30		4.2	4.2	4.2	4.3	4.1	3.5	4.1	4.1	4.2	4.3	4.2	3.6	30	
32		3.8	3.8	3.8	3.9	3.9	3.4	3.7	3.7	3.7	3.8	3.8	3.5	32	
34		3.5/33.2	3.5/33.5	3.5	3.5	3.5	3.3	3.3	3.3	3.4	3.5	3.4	3.4	34	
36				3.1	3.2	3.2	3.2	3/35.8	3.0	3.1	3.1	3.1	3.2	36	
38				2.9/37.5	2.9/38	2.9	3.0		3/36.1	2.7	2.8	2.8	2.9	38	
40						2.6	2.7			2.5	2.5	2.5	2.6	40	
42						2.4/41.9	2.4			2.5/40.1	2.4/40.6	2.3	2.3	42	
44							2.3/42.5					2.0	2.1	44	
46												2/44.5	2/45.1	46	

FIXED JIB LOAD CHART (FJ OPERATING CONDITION)

SCC750E Fixed Jib Load Chart 2/3
(Boom 33m-36m, Jib 9m-18m)

		Counterweight 24t													
		33						36							
Radius	9		13.5		18		9		13.5		18		Radius		
	15	30	15	30	15	30	15	30	15	30	15	30			
10	7/11.3						7/11.9						10		
12	7.0	7/13.3	7/13.3				7.0	7/13.9	7/13.9				12		
14	7.0	7.0	7.0				7.0	7.0	7.0			5.4/15.9	14		
16	7.0	7.0	7.0	6.3/16.3	5.3		7.0	7.0	7.0	6.3/16.8	5.4		16		
18	7.0	7.0	7.0	6.0	5.2	4.8/19.2	7.0	7.0	7.0	6.1	5.3	4.8/19.8	18		
20	7.0	7.0	7.0	5.7	5.2	4.7	7.0	7.0	7.0	5.8	5.2	4.8	20		
22	6.4	6.6	6.5	5.4	5.1	4.5	6.3	6.5	6.4	5.5	5.1	4.6	22		
24	5.6	5.8	5.7	5.2	5.0	4.3	5.5	5.7	5.6	5.3	5.0	4.3	24		
26	5.0	5.1	5.1	5.0	4.9	4.1	4.9	5.0	5.0	5.1	5.0	4.2	26		
28	4.4	4.5	4.5	4.7	4.6	3.9	4.3	4.4	4.4	4.6	4.5	4.0	28		
30	4.0	4.0	4.0	4.2	4.1	3.7	3.8	3.9	3.9	4.1	4.0	3.8	30		
32	3.5	3.6	3.6	3.7	3.7	3.6	3.4	3.5	3.5	3.6	3.6	3.7	32		
34	3.2	3.2	3.3	3.4	3.3	3.5	3.0	3.1	3.1	3.3	3.2	3.4	34		
36	2.8	2.9	2.9	3.0	3.0	3.1	2.7	2.8	2.8	2.9	2.9	3.0	36		
38	2.5	2.6	2.6	2.7	2.7	2.8	2.4	2.4	2.5	2.6	2.5	2.7	38		
40	2.5/38.4	2.5/38.7	2.3	2.4	2.4	2.5	2.1	2.2	2.2	2.3	2.3	2.4	40		
42			2.1	2.1	2.1	2.2	2/41	2/41.3	1.9	2.0	2.0	2.1	42		
44			2/42.7	2/43.2	1.9	2.0			1.7	1.8	1.8	1.9	44		
46					1.7	1.7			1.6/45.3	1.6/45.8	1.6	1.6	46		
48					1.6/47.1	1.6/47.7					1.4	1.4	48		
50											1.2/49.7	1.2	50		

FIXED JIB LOAD CHART (FJ OPERATING CONDITION)

SCC750E Fixed Jib Load Chart 3/3
(Boom 39m-42m, Jib 9m-18m)

		Counterweight 24t													
		39						42							
Radius	9		13.5		18		9		13.5		18		Radius		
	15	30	15	30	15	30	15	30	15	30	15	30			
12	7/12.5						7/13.1						12		
14	7.0	7/14.4	7/14.5				7.0	7/15	7/15				14		
16	7.0	7.0	7.0	6.3/17.4	5.4/16.4		7.0	7.0	7.0	6.3/18	5.4/17		16		
18	7.0	7.0	7.0	6.2	5.3		7.0	7.0	7.0	6.3	5.3		18		
20	7.0	7.0	7.0	5.9	5.2	4.8/20.4	7.0	7.0	7.0	6.0	5.2	4.8/20.9	20		
22	6.2	6.4	6.3	5.6	5.1	4.6	6.1	6.3	6.2	5.7	5.2	4.7	22		
24	5.4	5.6	5.5	5.4	5.1	4.4	5.3	5.5	5.4	5.5	5.1	4.5	24		
26	4.8	4.9	4.9	5.1	4.9	4.2	4.6	4.8	4.7	5.0	4.8	4.3	26		
28	4.2	4.3	4.3	4.5	4.4	4.1	4.1	4.2	4.2	4.4	4.3	4.1	28		
30	3.7	3.8	3.8	4.0	3.9	3.9	3.6	3.7	3.7	3.9	3.8	4.0	30		
32	3.3	3.4	3.4	3.6	3.5	3.7	3.2	3.3	3.3	3.5	3.4	3.6	32		
34	2.9	3.0	3.0	3.2	3.1	3.3	2.8	2.9	2.9	3.1	3.0	3.2	34		
36	2.6	2.7	2.7	2.8	2.7	2.9	2.4	2.5	2.5	2.7	2.6	2.8	36		
38	2.3	2.3	2.4	2.5	2.7	2.6	2.1	2.2	2.2	2.4	2.3	2.5	38		
40	2.0	2.1	2.1	2.2	2.7	2.3	1.9	1.9	2.0	2.1	2.0	2.2	40		
42	1.8	1.8	1.8	1.9	2.7	2.0	1.6	1.7	1.7	1.8	1.8	1.9	42		
44	1.6/43.6	1.6/43.9	1.6	1.7	2.7	1.8	1.4	1.4	1.5	1.6	1.5	1.7	44		
46			1.4	1.5	2.7	1.6	1.2	1.2	1.3	1.3	1.3	1.4	46		
48			1.2/47.9	1.2	2.7	1.3	1.2/46.2	1.2/46.5	1.1	1.1	1.1	1.2	48		
50				1.2/48.4	2.7	1.1			0.9	0.9	1.0	1.0	50		